



colorado metalsmithing association

**JUNE 2010**

**Volume 16 Number 2**

## Comments from the Chair

Spring is finally here and with it comes the excitement of another approaching CoMA Conference! We on the board have been busily planning details for upcoming events: the Salida conference and the pre- and post-workshops. We have added some new and exciting changes to our annual get-together, including reserving more space in which to hold activities such as the registration, silent auction, vendor sales, and refreshments. This year these will be held in the Annex, which is adjacent to the Ballroom.

As most of you know by now, we have an exceptional group of conference presenters: our own Bill Brinker, Michael Good, Albert Paley, Pat Flynn and Gary Noffke. Do not forget to sign up for the early-bird registration. After June 20, conference rates will go up. The earlier we know how many will attend the conference, the easier it is to plan for it.

Interest in the pre- and post-conference workshops has been impressive, and both workshops are currently fully enrolled. We are adding names of interested people to a wait list for each of the workshops. So if you are interested in taking either Michael Good's or Pat Flynn's workshop, and did not get your registration in yet, send a request to be on the waiting list to [comaforum1@comcast.net](mailto:comaforum1@comcast.net).

An important election of new Board Members will take place during our All-Members' Meeting in Salida. We are in need of four new Board Members to replace two who will be retiring from the Board and to augment the current number, in order to make the workload easier for those who will remain. Candidates must be familiar with CoMA, generally as members who have attended CoMA functions, such as our annual conference.

Working on the CoMA Board is extremely rewarding for those willing to commit their time and energy. Please consider submitting your name and a brief resume and explanation about why you would like to be a Board Member to [comaforum1@comcast.net](mailto:comaforum1@comcast.net), and we will place your name on the ballot. As a member of the Board, you will have a direct impact on the direction and activity planning of one of the nation's premier artistic guilds.

Please plan to attend our 14th annual conference this year! It will be a year to remember!!

Sincerely,

Elizabeth McDevitt

Chair, Colorado Metalsmithing Association

# 2010 CoMA Conference

## *Metal Art: Miniature to Monumental*

### The SteamPlant, Salida, Colorado

#### Friday, July 16

11:00 AM — 1:00 p.m.	Registration, Drop off of Silent Auction Donations — <i>Annex</i>
1:00 — 2:00 p.m.	Pin Swap/Tool Swap — <i>Courtyard</i>
2:00	Introduction and Welcome to Conference — <i>Theater</i>
2:30 — 4:00	Presenter: Michael Good — <i>Theater</i>
4:00 — 4:30	Break, Silent Auction Bidding Begins — <i>Annex</i>
4:30 — 5:30	All Members' Meeting and New Board Election
5:30 — 6:30	Wine Bar and Refreshments, Silent Auction Bidding
7:00 — 9:00	cultureclash Gallery All Members' Show Opening <i>cultureclash Gallery, 101 North F Street</i>

#### Saturday, July 17

9:00 a.m.	Registration, Coffee and Pastries — <i>SteamPlant Annex</i>
10:00 — 11:30	Presenter: Albert Paley — <i>Theater</i>
12:00 — 1:30 p.m.	Lunch, Silent Auction Bidding — <i>Courtyard, Riverside, Annex</i>
1:30 — 3:00	Presenter: Bill Brinker — <i>Theater</i>
3:00 — 3:30	Break, Silent Auction Bidding
3:30 — 5:00	Presenter: Gary Noffke — <i>Theater</i>
5:00 — 6:00	Wine Bar and Refreshments
	Final Silent Auction Bidding
6:00	Banquet — <i>Ballroom</i>

#### Sunday, July 18

9:30 — 10:30 a.m.	Coffee and Pastries, Board Meeting — <i>Annex</i>
10:30 — 12:00	Presenter: Pat Flynn — <i>Theater</i>
12:15 — 1:00 p.m.	Master's Forum — <i>Theater</i>

CoMA Conference Schedule is subject to change!

Tool Swap: Bring in tools or materials you no longer need and offer them for sale or trade.

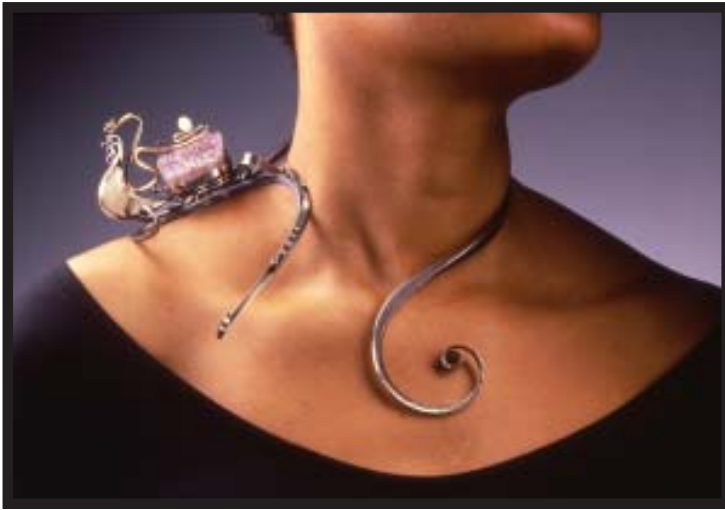
Pin Swap: Make 10-20 quick and easy brooches for trade with other members. Use innovative materials, found objects and IMAGINATION. Anything goes!

Silent Auction: A great fundraiser from CoMA, tax deduction for donors, and great way to get equipment, materials and jewelry and time shares at great prices. Search your studios for donations to bring and if you wish, label items with a MINIMUM opening bid. If you would like to donate and will not be attending, please notify [comaforum1@comcast.net](mailto:comaforum1@comcast.net) and we will make arrangements to collect donations and send you a tax receipt.

## Albert Paley

Albert Paley is a world-renowned metal artist of multiple talents. As a student at the Tyler School of Art in Philadelphia, he received his BFA and MFA, under the tutelage of Stan Lechtzin. He initially began his career as a jeweler, but soon focused his interest in larger, sculptural pieces. His works have ranged from decorative interior sculpture to massive architectural works.

Paley is the first metal sculptor to receive the Lifetime Achievement Award from the American Institute of Architects, the AIA's highest award to a non-architect. He has completed more than 60 site-specific works, commissioned by both public institutions and private corporations. He is perhaps best known for his Portal Gates at the Renwick Gallery of the Smithsonian Institution. Other notable works include the Portal Gates for the New York State Senate Chambers in Albany, a plaza sculpture for AT & T in Atlanta,



GA, and a 65-foot sculpture for the entry court of Bausch and Lomb's headquarters in Rochester, NY. Pieces by Paley can be found in the permanent collections of many major museums, including the Metropolitan Museum of Art in New York, the Museum of Fine Arts in Boston, the Victoria and Albert Museum and the British Museum in London, among many others.

Currently residing in Rochester, NY, Albert Paley holds an endowed chair at the Rochester Institute of Technology. Throughout his career, Paley has developed an inventive approach to form using traditional and nontraditional metalworking techniques. He has been instrumental in the resurgence of 20th, and now, 21<sup>st</sup> century metalsmithing.



Photos: Paley Studio Archives

## Bill Brinker

Bill Brinker was initially forced to make jewelry as a child, at the age of 12. He could devise no escape from the mandatory Jewelry Design class required of all students. To his great surprise, he became enthralled by the craft, excelling throughout his high school years under the tutelage of Mary Louise Rowe, learning silver fabrication techniques as well as cloisonné and champlevé enameling.

After completing his college philosophy studies in 1981, Bill immediately resumed his training in the jeweler's art, landing an apprenticeship with Kensington Jewelers, in Boulder, Colorado. This professional foundation in custom design was subsequently strengthened by several years as a production stone-setter, and as a bench jeweler in one of Denver's busiest wholesale tradeshops.

In 1986 Bill took a position as head jeweler for Mary Beall Designer Jeweler in Cherry Creek, Colorado, where he managed the workshop and personally executed the most advanced pieces for the next nine years.

In 1990 Bill began his long association with Lew Wackler. Together they researched the techniques required to produce European style objets de vertu, especially ornamental turning, engine turning, and guilloché enameling. In 1995 their efforts led to five years of collaborative work under contract to Zadora Ltd., producing many luxurious objets, from small hardstone boxes to lavish clock carousels with automata.

In addition to goldsmithing and guilloché enameling, Bill's work for Zadora now includes project management and technical design of complex commissions. A single project often requires the collaboration of goldsmiths, lapidarists, machinists, enamelists, engravers and horological engineers.

Most recently Bill's attention has returned to jewelry-scale work, especially guilloché jewelry, and to teaching.



## Michael Good

Michael Good is a jewelry designer whose name has become synonymous with the metal forming technique known as anticlastic raising. In the late 1960's, after a brief exploration into jewelry making with no defined style, Good began a series of 14K gold pieces using simple shapes with a hammered texture. In an effort to add dimension to his work, Good experimented and achieved success in forging flat sheets of metal into hollow, spring-like structures that curve and twist, becoming miniature sculptures. In 1979, a workshop with master metalsmith Heikki Seppa at the Haystack School in Maine reinforced Good's interest in anticlastic raising and formed the basis for his lifelong exploration of this process, also known as shell forming.



Good has also been willing to share his expertise through teaching at prestigious craft schools and universities, including Penland and the Revere Academy of Metalsmithing, as well as the University of Central England and the Royal College of Art Workshop in London. He has exhibited at the American Jewelry Design Council Members Exhibition, Aspects Group Show in Germany, as well as numerous one-man shows throughout the United States.

In 1998, Good began a three-year collaboration with well-known enamelist Marilyn Druin. Their work was considered technically innovative, with Druin's brilliant cloisonne designs on Good's sculptural gold objects. In all, the two created 20 pieces together, half of them exhibited at *Collaborations in Metal* held at the Aaron Faber Gallery in New York City.

Good continues to expand on his exceptional body of work, using 18 karat gold and platinum and stretching the limits of his material and his imagination. He makes his home in Rockport, Maine, where he works in a remodeled 100-year-old barn.

## Pat Flynn

The jewelry of Pat Flynn can be described as a convergence of contradictions: blackened, forged iron neckpieces resting delicately on the collarbone, nail brooches covered in gold and diamonds, and bracelets whose hinges mysteriously disappear. Flynn's work has a sculptural quality that allows the texture of the iron to remain, in striking contrast to the delicately set diamonds that are sprinkled here and there over the surface of a brooch or line the center of a cuff bracelet.

Flynn began making jewelry in high school, continued his studies at the State University of New York at New Paltz and then went on to a scholarship at the Haystack School in Maine. For years he worked as a bench jeweler in trade shops, allowing him to refine his technical skills and contributing to his innovative design of mechanisms, including hinges and hidden clasps. Flynn is a three-time recipient of the National Endowment for the Arts, Craftsman's Fellowship and was recognized in 1998 with the National Ornamental Metal Museum, Master Metalsmith Award.



Solo and group exhibitions have been the result of Flynn's meticulous attention to detail in his work and his understanding of line, symmetry and the fluidity of his forging. His work is in the permanent collections of the Art Institute of Chicago, the Metropolitan Museum of Art N.Y., the Museum of Fine Arts, Boston and the Renwick Gallery, Smithsonian Institution, Washington, D.C. Additionally, Flynn maintains a teaching schedule throughout the United States at prestigious crafts schools and colleges.

*Photos: Hap Sakwa*



## Gary Noffke

Gary Noffke is a metalsmith's metalsmith. Deep in the Georgia woods, Gary forges masterworks in copper, silver and gold in a studio which he built himself. His physical environment is one that would encourage an artist to stay and work unencumbered by the distractions of urban life.

Noffke is one of the great 20<sup>th</sup> century movers of metal. He is a blacksmith, a knifemaker, silversmith, coppersmith and goldsmith as well as an educator whose tutelage has influenced scores of fellow metalsmiths. Now Professor of Art Emeritus, he developed the metals program at the University of Georgia in Athens. An innovator in developing new alloys for hot forging, Gary Noffke continues to pursue his love of hot forging in nonferrous metals.



In his professional career spanning five decades, his work has been exhibited nationally and internationally, including two solo exhibitions at the National Ornamental Museum in Memphis and the prestigious and widely travelled, *The Art of Gold* exhibit. His work is in the permanent collections of the Georgia Museum of Art, the National Ornamental Museum, the Museum of Art and Design in New York, the Vatican, and in numerous private collections including that of Herman Junger, Archbishop Desmond Tutu, Mikhail Gorbachev and Nelson Mandela. In 2001, he was elected to the College of Fellows of the American Craft Council.

## Call for Donations – Annual CoMA Silent Auction

On Saturday, July 17<sup>th</sup>, CoMA will be having our annual Silent Auction. The auction coincides with this year's conference, held the weekend of July 16<sup>th</sup>, at the SteamPlant in Salida. It is our goal to gather goods and services of all types in an effort to make this year's auction the biggest in CoMA history!

Tax-deductible donations may be in the form of services, raw materials, books, gemstones, tools, studio supplies, or artwork. Photography, advertising, massages and other services are all things that metalsmiths and jewelers need! Consider donating an original piece of your work, a tool that you no longer use, or a discount on a workshop. All proceeds from the auction go to benefit CoMA and its members and will aid in funding future conferences.

Silent Auction drop off times will be held on Friday, July 16<sup>th</sup> from 11:00 a.m. - 1:00 p.m. and from 3:30 p.m. - 5:30 p.m. If you would like to make a donation at any other time, please contact me at [pattie@metalartschool.com](mailto:pattie@metalartschool.com) or at [comaforum1@comcast.net](mailto:comaforum1@comcast.net). We greatly appreciate your donation!

## Naja Tools & Supply, Inc.

The Naja will be returning to the CoMA conference again this year. We'd be happy to "bag and bring" your specific tool and supply requests to Salida. We'll be taking orders via email ([naja@najatools.com](mailto:naja@najatools.com)) or by phone 303-426-6284 prior to the July 16-18, 2010 event. Please have all orders into us no later than June 28 to ensure delivery of metals.

We will also be bringing our new hammers – designed by Travis Ogden and manufactured by Bill Fretz! CoMA members will be the first to see (and be able to test drive) these amazing high quality hammers. You will not be disappointed!

The Denver School of Metal Arts (DSMA) will be joining us and will have plenty of samples from recent classes and workshops they've taught. The Denver School of Metal Arts is becoming exactly what we had hoped it would: a metal arts school that is dedicated to bringing the very best classes and workshops to our community. We have more than 35 new workshops for the upcoming summer, including a two-day workshop July 12 & 13 and again on July 14 & 15—*Exotic Patinas on Copper* with David Huang. DSMA will be the hosting school for the already-filled-up Michael Goode workshop on July 19, 20, 21. Also be looking for the Fall 2010 schedule—Bill Fretz will be joining the school for a two-day workshop on Sept. 20 and 21, 2010.

Check out [www.metalartschool.com](http://www.metalartschool.com) for a complete listing. Hurry and sign up; classes are filling up quickly!

## Lodging Options for Salida Conference

Come early and stay late; Salida is a wonderful place. Enjoy the historic downtown for great shopping and fine dining. There are numerous hot springs in the area and whitewater rafting, as well as our beautiful mountain hiking, biking, and sight-seeing. There are numerous "14ers" in the area, including Mt. Antero, which is a site for collecting aquamarine. Rockhunting is abundantly productive for jasper, granite, hematite and petrified wood, and rockhunting tours are easily arranged for groups.

**American Classic Inn** - 7545 West US Hwy 50; Salida, CO; 81201  
phone: 719-539-6655; toll free: 800-682-8513; fax: 719-539-6657  
*Family-owned with your family in mind*

**BackRoads Motel and Grill** - 330 W Hwy 291; Salida, CO; 81201  
phone: 719-530-0405; fax: 719-539-2470  
*Newly remodeled, this family-owned motel will provide the vintage charm of an older motel with the amenities of a new motel for you and your family in friendly Salida, Colorado. Convenience is the ticket with dining at our in-house grill just steps from your room, offering homestyle Breakfast, Lunch and Dinner.*

**Circle R Motel** - 304 East Hwy 50; Salida, CO; 81201  
phone: 719-539-6296; toll free: 800-755-6296  
*Experience a AAA-rated vintage motel owned by Colorado natives. Popular prices, pet friendly, cable TV, hot tub, and guest laundry.*

**Holiday Inn Express** - 7400 U.S. Hwy 50 West; Salida, CO; 81201  
phone: 719-539-8500; toll free: 866-823-8753; fax: 719-539-7420  
*Enjoy friendly, personal service & western hospitality of a small mountain town motel, with modern amenities & facilities of a big city hotel chain.*

**Salida Super 8** - 525 W. Rainbow Blvd. (Hwy 50); Salida, CO; 81201  
phone: 719-539-6689; toll free: 800-800-8000; fax: 719-539-7018  
*52 rooms, visit the family/pet friendly Salida Super 8. Enjoy our pool, relax on our sun deck amid Colorado's highest peaks. Free High Speed Internet!*

**Silver Ridge Lodge** - 545 West Hwy 50; Salida, CO; 81201  
phone: 719-539-2553; toll free: 877-268-3320  
*Convenience and Hospitality await you, near restaurants, Hot Springs Pool and historic downtown Salida. Heated Pool & Hot tub, Pets Okay.*

**Travelodge** - 7310 W. US Hwy 50; Salida, CO; 81211  
phone: 719-539-2528; toll free: 800-578-7878; fax: 719-539-2528  
*A distinctive motel in the 'Heart of the Rockies'*

**Woodland Motel** - 903 West 1st Street; Salida, CO; 81201  
phone: 719-539-4980; toll free: 800-488-0456; fax: 719-529-7790  
*Colorado lodging the way you want it. A variety of accommodations to choose from: singles, doubles, efficiencies, and 1-2 bedroom condos. This quaint but well-run motel is especially popular with CoMA attendees, so book soon.*

2010 CoMA Conference
July 16-18, 2010
Registration Form

Come join us in Salida for CoMA's annual conference. This is a great opportunity to learn about some unique techniques from nationally recognized experts and to catch up on what's new with your fellow metalsmiths.

Name
Address
City State Zip
Phone
E-mail

Receipt of registration materials will be acknowledged via e-mail.

Registration fees received on or before June 20, 2010:

Current Member: \$175 Fee Enclosed \$
Non-Member: \$225
Student Member: \$135
Student Non-Member: \$180

FORMS RECEIVED AFTER June 20, 2010, add \$25

Late Fee \$

This year's members' banquet will be catered and held at the SteamPlant.

Cost for the banquet is INCLUDED in the Registration fee. Additional meals for accompanying persons may be purchased for \$25

Additional Meals \$

Total Due \$

Method of Payment:

Check Mastercard Visa

Card # Expiration

Name on Credit Card

Signature

Liability Release: CoMA, its directors, staff and members disclaim any responsibility or liability for damages or injuries as a result of my participating in the conference at the Salida SteamPlant. I understand and am aware of the risk of property damage and personal injury arising from the use of equipment and chemicals in the metalsmithing field.

Signature (Required)

Please mail completed registration form and payment to: CoMA PO Box 38064, CO Springs, CO 80937-8064

## Announcements

**Arapahoe Community College in Littleton, Colorado**, will be offering a **stone setting class** in the Fall semester. Art 275 – Special Topics in Stone Setting, Monday and Wednesday afternoons, 1:00 p.m. - 3:30 p.m. This is a three credit hour class and will cover several styles of setting. Registration is currently happening. Class begins in mid August. Office of Admissions telephone number is 303-797-5621. Randy Burns will be the instructor.

### New Category! – Medicine Bow Agate

Medicine Bow Dendritic Agate is a white agate with black manganese spots or dendrites. It is found in veins and bubbles in rock that has been permeated by volcanic gasses. Medicine Bow Agate comes from the west side of the Laramie Range in the Wyoming Medicine Bow Country. Dendrites are tree-like inclusions, and were named after the Greek word meaning tree-like.

**Metaphysical Properties:** Dendritic Agate is said to assist one in overcoming the sources of guilt, resentment, envy, shame, blame, and other self-destructive emotions.



**Newsletter and Email Information:** Just a clarification about information dissemination – The CoMA newsletter is emailed quarterly in March, June, September, and December. Any information that is timely, and can be put into the newsletter, that will be the approach. As for other information, announcement of local workshops, classes, and CoMA-sponsored events, we will continue to convey that information via email. We do not want to take on advertising for individual and/or personal shows or exhibitions via email, but if the information is timely for the newsletter, we will be more than happy to put it in the Members' News section. Thank you for your understanding!

## Member News

**All CoMA Members!** We would love to have more photos of members work on our Gallery section of the website! Please send 300 dpi .jpg images to: Susan Nayduch at snayduch@comcast.net with the following info: name, title of piece, materials used.

**Kathleen Krucoff's** art jewelry has been published by *New Art Review* in their book, *Just Jewelry*. The book will be available to galleries and at *New Art Review* promotional events for those looking for the latest upcoming investment art. This book will also be available through Amazon.com towards the end of February. The editor is Kathy Augustine. Pre-orders are currently being accepted at their website: <http://www.new-art-review.com/bookstore.html>.

**Chris Nelson** has been juried in and accepted as a participant in American Craft Exposition 2010 in Evanston, Illinois, showing in the Emerging Artist category. The dates of the show are August 27-29, 2010. This show is rated by ArtFairSourceBook as #7 of the top 600 shows in the United States. This will be Chris's first indoor show east of Colorado!

*continues*

### CoMA Board Members

Chair  
Elizabeth McDevitt  
Colorado Springs, Colorado  
goldcsau@aol.com

Treasurer  
Linda Scott  
Colorado Springs, Colorado  
mljmsscott@comcast.net

Secretary  
Micheline Berkey  
Evergreen, Colorado  
mab3578@earthlink.net

Newsletter  
Lori Baer  
Lakewood, Colorado  
lori.baer@gmail.com

Conference Coordinator  
Elizabeth McDevitt  
Colorado Springs, Colorado  
goldcsau@aol.com

Auctions  
Patty Parkhurst  
Denver, Colorado  
pattie@metalartschool.com

Publicity/Exhibitions  
Lexi Erickson  
Highlands Ranch, Colorado  
lexi.erickson@mac.com

Members-at-large  
Joe Korth  
Denver, Colorado  
joekorth@comcast.net

Richard Sweetman  
Denver, Colorado  
hotrodrs25@yahoo.com

Web  
Suzanne Nayduch  
Fort Collins, Colorado  
snayduch@comcast.net

**Char Schutte** has been juried into the “Commonwheel” co-op in Manitou Springs! She is a resident artist at the TLCA (Tri Lakes Center for the Arts) Kaiser Frazer building in Palmer Lake. <http://trilakesarts.org/>

**Jim Kelso** wrote an article for Daruma Magazine, issue # 65. It is about work he saw in Japan and includes some of Jim’s own work. Here is a link: <http://www.darumamagazine.com/new/category/daruma-65/>  
Also, Jim has updated his webpage where recent work and tutorials can be found! [www.jimkelso.com](http://www.jimkelso.com)

**Sharon Schaffner** will be part of a four-person show at the Archeology Museum in Tarragona, Spain (south of Barcelona). Opening on the 17th of June, the show *Order and Chaos* will be exhibited for three months. The month of June is filled with Sharon teaching workshops in the Llotja School of Art in Barcelona and attending the International Jewelry Symposium at the Tarragona School of Art. A trip is also planned to visit The Guggenheim in Bilbao.

## Announcements



DENVER BOTANIC  
GARDENS

The first CoMA-Denver Botanic Gardens Show has attracted strong interest among CoMA members. The number of artists submitting applications to the exhibit exceeded our initial expectations, resulting in negotiations for a larger space than originally planned. We have now started a waiting list, so if you did not get in and still hope to participate, please see contact information at the bottom of this article.

This promises to be a very popular venue for our artists, and we are hoping this will become a CoMA tradition. The show will take place **October 16 & 17th, at the Denver Botanic Gardens**, which will also be hosting “Moore in the Gardens,” a magnificent event showcasing 20 of Henry Moore’s monumental sculptures.

The event will showcase 29 of CoMA’s jewelers, and will display a diversity of styles and techniques. This show has also pulled CoMA members from four different states, which is a very exciting development. “This show has a lot of firsts,” says the show’s organizer, Lexi Erickson. “Just to be in the presence of the autumn beauty of the Gardens is in itself spectacular. Throw in the sculptures of a respected master such as Henry Moore and the event takes on breathtaking proportions. It’s a bit over the top to experience,” she continued, “and then when you add the work of our artists, well, its just got to be seen to be believed. We hope the show is elegant, colorful, and very successful. The Gardens itself has been most cooperative and are very excited to have us.”

More information about the show will be forthcoming in June. Please reserve that weekend for a day at the Botanic Gardens! Stop by for lunch at the Botanic Gardens Café! For more information, or to volunteer to help with the show, please contact [lexi@LexiEricksonDesigns.com](mailto:lexi@LexiEricksonDesigns.com).

CoMA Newsletter Guidelines and Deadlines: Manuscripts, announcements, news releases, black and white photographs, illustrations, information about exhibitions, calls for entries, school programs, workshops, etc. are welcome and will be considered for publication.

Deadlines for submissions will be the first day of February, May, August, and November. You will receive the newsletter about a month later. Email articles and materials to Lori Baer: [lori.baer@gmail.com](mailto:lori.baer@gmail.com).

CoMA, its staff, director, officers, editors, members, and the CoMA newsletter specifically disclaims any responsibility or liability for damages or injuries as a result of any construction, design, use, manufacture or other activity undertaken as a result of the use or application of information contained in any CoMA article.

# Gathering of the Guilds

CoMA members participated in the Colorado Arts and Crafts Society *Gathering of the Guilds* on Saturday, May 8. It was a beautiful day at Boettcher Mansion on Lookout Mountain, with a wonderful representation of some of Colorado's fine craftsmanship, including the Book Arts League, Colorado Calligraphers Guild, Rocky Mountain Weavers Guild, and other participating associations and fellowships. CoMA members Linda McVoy, Chi Leary, Elise Simmons, Susan Phillips, Elizabeth McDevitt and Michelene Berkey exhibited their work and demonstrated the art of chasing and repousse' to a crowd of interested artisans. This was a 'first' for CACS and for CoMA.....and hopefully a continuing tradition.



## Eversley Media

- Image Editing
- Processing & Format Conversion
- Photographic Services by appointment
- Zapplication/CaFÉ/image prep
- Graphic Design
- Scanning
- \$50/hr

Heidi Eversley  
303.547.8703  
www.eversleymedia.com  
image on the left, longtime client  
Suzanne Williams Jewelry



**Matrix Dies**



These Matrix Dies have been Laser cut and come in sets of 1", 3/4", and 1/2" for each shape. They are \$20/set. Postage for 2 sets is \$5 and postage for 3-5 sets is \$10. More details can be viewed on my website [www.nanzaalund.com](http://www.nanzaalund.com)



P.O. Box 943, Bellingham, WA 98227



*Krucoff Studios*  
Art Photography

Jury, ZAPP, Magazine  
Photography Services

Daniel Krucoff  
719.494.1405

[dan@krucoffstudios.com](mailto:dan@krucoffstudios.com)  
<http://www.krucoffstudios.com>  
(click on services)



Spring/Summer 2010

Colorado's largest  
supplier of  
tools & materials  
for jewelry artists  
& crafts people

We ship UPS daily

Low Tax rate of  
4.85%

[Najatools.com](http://Najatools.com)

**June 7:**  
Earrings due for 4th annual  
Naja Jewelry Competition

**June 19:**  
Naja & Denver School  
of Metal Arts Open House

**July 16, 17, 18:**  
CoMA in Salida! The Naja is  
happy to bag & bring tools,  
metals, etc. to the conference for  
you. Please order by June 28,  
2010 to ensure delivery

Our NEW Naja hammers  
designed by Travis Ogden &  
manufactured by Bill Fretz will be  
available at our CoMA booth!

6810 N. Broadway, Unit J - Denver, CO 80221  
303-426-6284 - [najatools.com](http://najatools.com) - [naja@najatools.com](mailto:naja@najatools.com)



The Denver School of Metal Arts  
is a dynamic jewelry making  
school that focuses on teaching  
metalsmithing skills to students  
of all levels.

**Summer instructors include:**  
Judy Brown, Dave Burchett,  
Lexi Erickson, Michael Good,  
Christine Grininger, David Huang,  
J.C. Milner, Travis Ogden,  
Richard Sweetman,  
Carolyn Plummer, Craig Wright

10% off tools at the Naja  
while enrolled at the School

6810 N. Broadway, Unit L - Denver, CO 80221  
303-428-3162 - [metalartschool.com](http://metalartschool.com) - [mail@metalartschool.com](mailto:mail@metalartschool.com)

Summer 2010

Over 32 unique  
Summer Workshops

4 day intensives

5 - 10 week classes

[metalartschool.com](http://metalartschool.com)



CLEAR CREEK ACADEMY  
OF JEWELRY AND METAL ARTS

Offering classes and workshops in  
Silversmithing, Goldsmithing, Forging &  
Forming, Lost Wax Casting, Stone Setting,  
PMC and more.

### Summer 2010

The first summer session of classes begins the week of June 7, 2010; the second session will begin the week of July 19, 2010. Each class will be for 4 hours, twice a week for 3 consecutive weeks. Please take a look at what classes would suit your interests. You may register on line at our web site or phone the school.

Look for nationally & internationally known artists coming to teach in the future.

Here are some of the workshops:

– Forging & Forming with “Fretz” Hammers – Forming a Baby Spoon – Precious Metal Clay –

### Michael Boyd - Integration of Stone and Metal

5 Days – June 3, 2010 to June 7, 2010 from 9:00 am to 4:00 pm.

Tuition - \$750.00 if paid by May 15, 2010, after May 15, 2010

Tuition is \$800.00.

The workshop size is limited. If you are interested please contact the school or register on line.

### The Navajo Street Arts District

On June 26, 2010, all of the studios in our neighborhood are sponsoring a BBQ from 1pm to 3pm. There will be music, demos, food and as always, great art. We will post more information as we get the details. It should be fun! Hope to see you here!!

### Harold O'Connor - Architectural Inspired Jewelry

4 day workshop, the last weekend in August  
For more information please visit our website

[www.clearcreekacademy.com](http://www.clearcreekacademy.com)  
3648 Navajo St. Denver, CO 80211  
(303) 429-1401

# gallery 150

wearable & nonwearable art

Inspired and Affordable  
Fine Jewelry, Fine Art, Fine Crafts

Decorate Yourself  
Decorate Your Home

150 West First St.  
in Historic Downtown  
Salida, Colorado

(719) 539-2971

# cultureclash

ART • OBJECTS • JEWELRY



Artisan Jewelry

Contemporary

Innovative

101 North F Street  
Salida, Colorado

719.539.3118

ring by michael boyd

[cultureclash@hotmail.com](mailto:cultureclash@hotmail.com)

800.889.0396

www.ntrmetals.com



We melt, assay & pay for your gold while you wait!

GOLD 98% with zero fees

**COMPLETE CONFIDENCE**

NTR Metals® has the financial strength and liquidity to handle successfully all of your refining needs, no matter how large. Our reputation for integrity and professionalism is unparalleled. And our use of the latest technology allows us to **melt, assay & pay** gold settlements within **ONE HOUR**. None of our competition can match this combination of financial strength and service.



*Experience the NTR Difference*

Liquidity ♦ Locations ♦ Speed

# Colorado Metalsmithing Association Membership Application

Click on the box to highlight  
the fields then type in the  
information and print.

Networking, Resources, Workshops, Slide Presentations, Newsletters, Education,  
Guest Lectures, Web Marketing and More...

To become a member of COMA, please provide the following information:

Name: \_\_\_\_\_ Date: \_\_\_\_\_

Bus. Name: \_\_\_\_\_ Fax #: \_\_\_\_\_

Address: \_\_\_\_\_ Phone #: \_\_\_\_\_

City/State/Zip: \_\_\_\_\_

Email: \_\_\_\_\_

Check one: \_\_\_\_\_ New Member \_\_\_\_\_ Renewal

Method of Payment: \_\_\_\_\_ Check \_\_\_\_\_ Credit Card

MC/VISA # \_\_\_\_\_ Exp. Date: \_\_\_\_\_

Signature: \_\_\_\_\_

I would like to volunteer to help the COMA Organization. Please circle all that apply.

My interests are:    Marketing    Advertising    Computer    Programs    Phones

Other: \_\_\_\_\_

## Membership Costs:

A membership will run from January 1 to December 31. Renew each January.  
Regular Membership is \$40.00. Student Membership \$25.00

To qualify for Student Membership you must be enrolled in a degree program and a copy of your current student ID/activity card must accompany your check. Please contact a board member for further clarification.

Send form and check payable to COMA (Colorado Metalsmithing Association) to:

**COMA**  
**PO Box 38064**  
**Colorado Springs, CO**  
**80937-8064**

For more information, contact the board at [comaforum1@comcast.net](mailto:comaforum1@comcast.net) or visit our web site:  
[www.coloradometalsmiths.org](http://www.coloradometalsmiths.org)

We will be compiling our member information into a directory for distribution among current members ONLY. The directory will include name, business name, address and email address. You may opt out of this directory by placing a check in the space below.

\_\_\_\_\_ I would like my information EXCLUDED from the COMA directory.